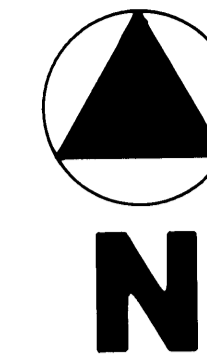


A PLAT OF TURTLE CREEK EAST, II, A P.U.D.

BEING A REPLAT OF A PORTION OF TURTLE CREEK EAST
LYING IN SECTION 23, TOWNSHIP 40 S., RANGE 42 E.,
AND RECORDED IN PLAT BOOK 8 PAGE 64
PUBLIC RECORDS, MARTIN COUNTY, FLORIDA.

NOVEMBER, 1988



SCALE IN FEET
0 50 100
1" = 50'

SHEET 2 of 2

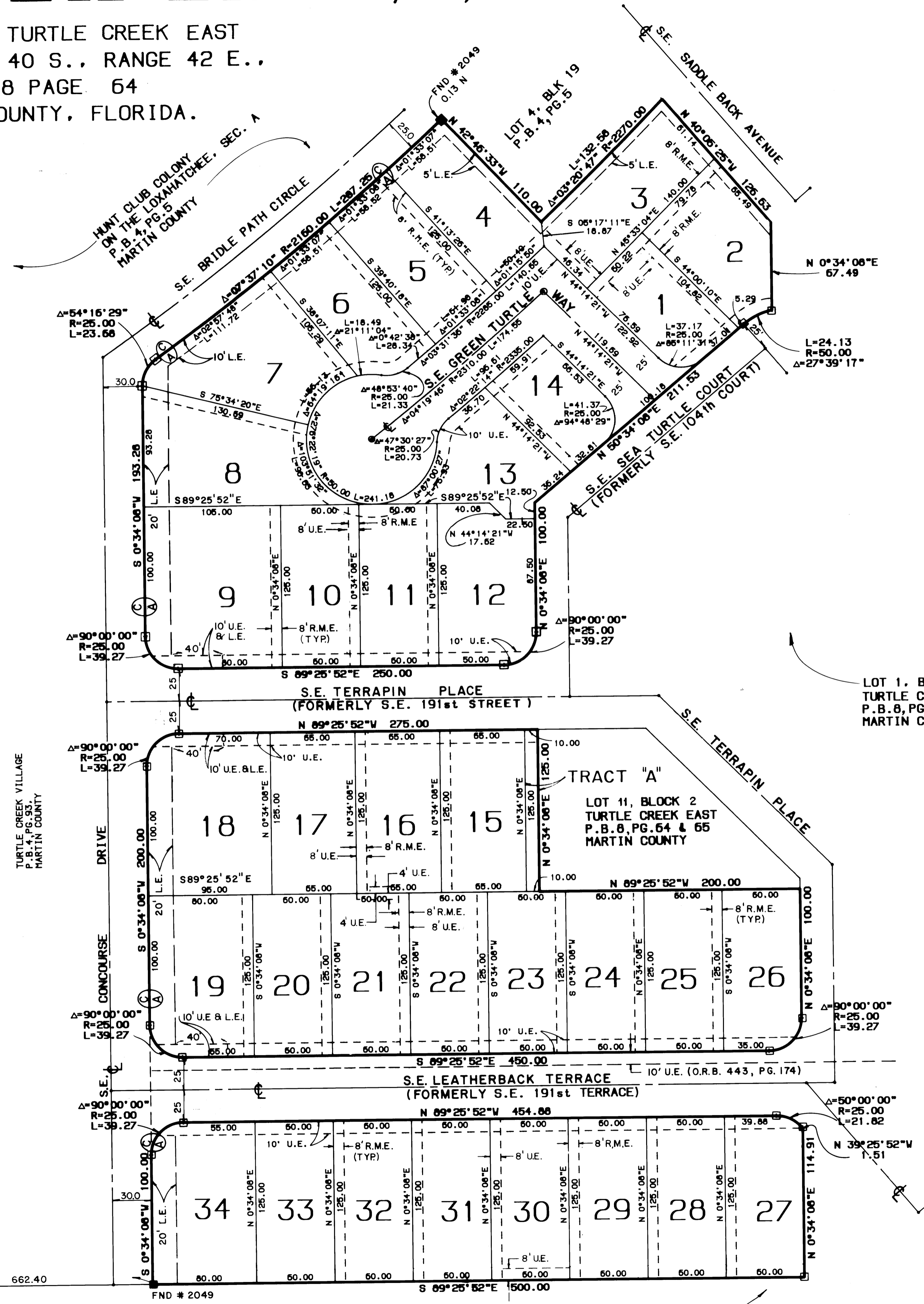
I, MARSHA STILLER
CLERK OF THE CIRCUIT
COURT OF MARTIN COUNTY,
FLORIDA, HEREBY CERTIFY
THAT THIS PLAT WAS FILED
FOR RECORD IN PLAT BOOK
11, PAGE 80,
MARTIN COUNTY, FLORIDA.
PUBLIC RECORDS THIS
DAY OF _____
19__.

MARSHA STILLER, CLERK
CIRCUIT COURT,
MARTIN COUNTY, FLORIDA

BY: _____
DEPUTY CLERK

FILE NO.:

(CIRCUIT COURT SEAL)



LOT 1, BLOCK 1
TURTLE CREEK EAST
P.B. 8, PG. 64
MARTIN COUNTY

TRACT "A"
LOT 11, BLOCK 2
TURTLE CREEK EAST
P.B. 8, PG. 64 & 65
MARTIN COUNTY

- NOTES:
- - DENOTES SET P.R.M. (PERMANENT REFERENCE MONUMENT)
 - - DENOTES FOUND P.R.M. (PERMANENT REFERENCE MONUMENT)
 - ⊙ - DENOTES SET P.C.P. (PERMANENT CONTROL POINT)

U.E. - UTILITY EASEMENT
R.M.E. - RECIPROCAL MAINTENANCE EASEMENT
L.E. - LANDSCAPE EASEMENT

THERE MAY BE ADDITIONAL RESTRICTIONS THAT ARE NOT RECORDED ON THIS PLAT THAT MAY BE FOUND IN THE PUBLIC RECORDS OF THIS COUNTY

BEARING BASE:
BEARINGS SHOWN HEREON ARE BASED ON THE PLAT OF TURTLE CREEK EAST AS RECORDED IN PLAT BOOK 8, PAGE 64 MARTIN COUNTY, FLORIDA.

THERE SHALL BE NO BUILDINGS OR OTHER PERMANENT STRUCTURES PLACED ON THE UTILITY EASEMENTS.

THERE SHALL BE NO LOT SPLITS EXCEPT TO CREATE LARGER LOTS.

(C/A) - DENOTES "CONTROL OF ACCESS" NO VEHICULAR ACCESS WITHOUT THE APPROVAL FROM THE BOARD OF COUNTY COMMISSIONERS OF MARTIN COUNTY, FLORIDA.

S. 1/4 CORNER
SEC. 23/40/42

S.W. CORNER, GOV'T.
LOT 7

TEQUESTA, P.B. 25, PG. 7-15, PALM BEACH COUNTY

LINDAHL, BROWNING, FERRARI & HELLSTROM Consulting Engineers, Planners & Surveyors		22
BLDG. 5000, SUITE 104 210 JUPITER LAKES BLVD. JUPITER, FL 33408	10 CENTRAL PARKWAY SUITE 420 STUART, FL 33497	